



May we call on you...

....when we next visit your part of the country?

To satisfy the ever-increasing demand for high-class material we need general and specialised collections, single rarities, etc., and the BOND STREET STAMP AUCTIONS will ensure the highest realisation for your property (liberal advances are available pending sale if desired).

Our "Travelling Experts" are always available to give advice in all matters regarding the disposal of stamps and a visit from us will give you both a market valuation and, if required, transport of the stamps to our premises.

If your need is for a valuation for insurance purposes, this can also be undertaken, as can the actual arranging of an insurance policy.

For further details and helpful literature please write or phone today.

H.R. HARMER LTD.

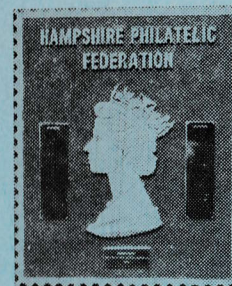
The International Stamp Auctioneers

41 NEW BOND STREET, LONDON, W1A 4EH

Telephone: 01-629 0218

HAMPSHIRE PHILATELIC FEDERATION

FOURTH ANNUAL CONVENTION



"The Howard-White Trophy"

PETERSFIELD & DISTRICT PHILATELIC SOCIETY

FOUNDED 1966

EXHIBITION

Stamps and Postal History

ON

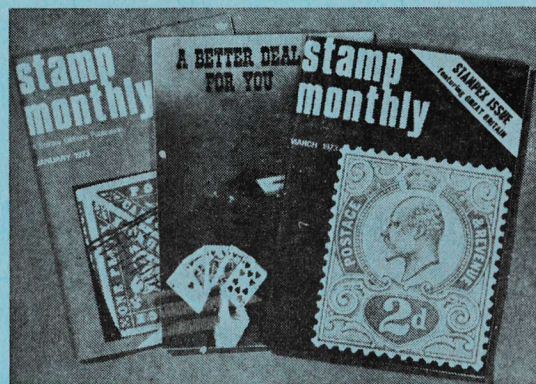
SATURDAY, JUNE 9, 1973

11 a.m. to 6 p.m.

AT THE TOWN HALL, PETERSFIELD

Admission **10p** (under 16 years **5p**, family **20p**)

THERE ARE 12 MAJOR ISSUES EVERY COLLECTOR SHOULD HAVE -



Open a yearly subscription now !

Stamp Monthly is Britain's biggest-selling monthly magazine for collectors. It's also good enough to keep for permanent reference, and for £1.32 you can have a handsome black binder to hold 12 copies. For just 18p per month you get articles on every aspect of philately, a comprehensive new issue guide and pages of advertisements which open up the entire stamp market for you. PLUS The Crown Agents Gazette and pull-out COLOUR SUPPLEMENTS. Can you afford to be without it? Write for subscription forms to:

**STANLEY GIBBONS MAGAZINES LTD.
DRURY HOUSE, RUSSELL STREET,
LONDON WC2B 5HD**

A WELCOME FROM THE PRESIDENT OF
THE HAMPSHIRE PHILATELIC FEDERATION
F. B. Howard-White, M.C., F.R.P.S.L.

Picturesque Petersfield, framed with wooded hills, is our venue this year and our cordial thanks are due to its keen Philatelic Society for all the admirable arrangements that have been made.

Nestling at the foot of the towering, turf-covered, chalk downs, Petersfield has not always had its A.3.

For the immortal Samuel Pepys tells us that he needed a guide from Gilford (sic) to Petersfield where he and his friends:-

"... bated (sic) at Petersfield, in the room which the King lay in lately at his being there."

Here very merry, and played us and our wives at bowls."

Once again we are grateful to our friends in the trade who support our Convention and whose choice material attracts all who aim at enhancing their collections.

As outlined in its latest Bulletin, the Hampshire Philatelic Federation goes from strength to strength, thanks to the untiring efforts of its Committee and, both within and outside the county, much is being done to promote the hobby that brings us all together.

I bid you a warm welcome and may today be one of much happiness and enjoyment to all.

F. B. Howard-White.

CATALOGUE OF EXHIBITS

Frame

1. DESIGNER'S ITEMS
A selection of design material from one of Great Britain's leading stamp designers.
2. MALTA
A selection of stamps from the George Cross Island.
3. UGANDA
The early "locals" produced by Missionaries.
4. JUST FOR FUN
"The lighter side of Philately".
5. FALKLAND ISLANDS
Mint and used, issues from 1878 to 1952, and postal stationary.
6. MOROCCO AGENCIES
Includes Gibraltar used in Morocco, and 1957 "missing hyphen".
7. ADEN
Indian stamps used in Aden and Persian Gulf ports.
8. NIGER COAST
A collection of postmarks.
9. BRITISH COMMONWEALTH
A collection of postal stationary cut-outs. "A much neglected philatelic field".
10. NORTH BORNEO
A general collection of stamps, including Postage Dues.

Frame

11. PAPUA AND NEW GUINEA
Australian stamps used in the Territory; general issues from 1952 to 1970.
12. SWITZERLAND
Swiss Railway Cancellations, and a Bela Szekula overprint.
13. LOCAL POSTAL HISTORY
A selection of covers and postcards, dating from 1835, posted in Petersfield and the surrounding area.
14. CHINA
A selection of general issues.
15. CRICKET
A thematic collection.
16. GUERNSEY
Pre and post independence stamps.
17. GREAT BRITAIN
Free Frank Fronts and Covers signed by famous people.
18. GREAT BRITAIN
A selection of commemorative stamps.
19. NEW ZEALAND
A study of the 1935-49 issue.
20. CHRISTMAS
A collection of stamps from Great Britain and the Commonwealth depicting Christmas.

Frame

- 21 INDEPENDENCE
Stamps of the independent countries
of Africa.
- 22 ART ON STAMPS
A thematic collection of paintings
on stamps.
- 23 THAILAND
A general collection up to 1940.
- 24 THREE THEMES
Oriental Journey; Conservation in
Britain; The Letter "I" - Indigo.
- 25
- 26 BANGLADESH
A selection of covers from one of
the Commonwealth's newest members.
- 27 NEW ZEALAND
From earlies (Chalon heads) to 1930
pictorials.
- 28 GREAT BRITAIN
A collection of Ship Letters,
including some from the South of
England.
- 29 CANADA
Early Queen Victorian stamps, 1859
cents issues, large and small heads,
and later commemoratives.

STIMULATE YOUR INTEREST
IN STAMPS BY

JOINING YOUR LOCAL PHILATELIC SOCIETY!

**CONSULT
US
FOR THE REPAIR
MAINTAINANCE
AND IMPROVEMENT
TO YOUR PROPERTY**

E. CANTERBURY Ltd.
PENNS ROAD PETERSFIELD
Telephone 2197/8

Thwaites & Watts

For a Better Printing and Stationery Service

SHOP: 25-27 Chapel Street, Petersfield Tel: 4400

PRINTING: 11 Lavant Street, Petersfield Tel: 4126

* We now stock a wide range of "LETTERPRESS"
Instant Lettering



Specialists in
Great Britain and
Australia

Dealers in
Stamps of the World

WANTS LISTS
A SPECIALITY

109a HIGH STREET, WINCHESTER, HANTS. Tel: 62491

Kill two birds with one stone!! Pay a visit to Winchester, enjoy the sightseeing and the shopping and at the same time visit our two Showrooms in the High Street, where you can browse through our very extensive range of G.B., Commonwealth and Foreign stamps. Over 10,000 stamps and covers always on display — write now for our FREE monthly list.

ALBUMS, CATALOGUES, STOCKBOOKS, IN FACT
ALL ACCESSORIES ALWAYS IN STOCK

Open daily from 9.00 a.m. to 5.30 p.m.

A VISIT TO WINCHESTER IS A MUST!

The U.H. Trade department

The Commonwealth Queen Elizabeth II Catalogue

Recognized throughout the world as a leading reference on this period of Commonwealth stamps.

Available to the trade at usual discounts. Write for details of price levels.

The U.H. Stamp Digest

Read by both collectors and dealers throughout the world the digest offers up to 32 pages of offers each month. For the trade of course it is ideal for a regular price guide and all offers carry a trade consideration of 10% discount. (except special offers).

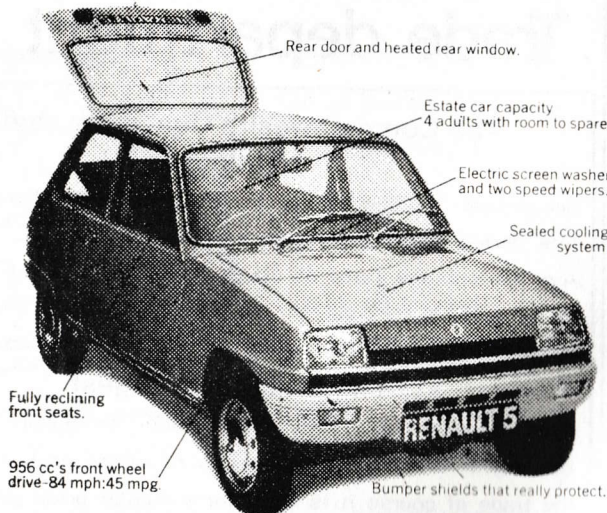
Subscription : £1.00 a year inland; £2.00 overseas (seamail) and £5 airmail. Send for a specimen copy today.

New Issues

We operate Britain's largest Retail New Issue Service and we are always interested in acquiring existing services at top prices. For further details please write.

Urch, Harris & Co. Ltd.
7 Richmond Hill Avenue
Bristol, BS8 1BQ, England

THE NEW RENAULT 5. IT'S WHAT YOU'VE BEEN ASKING FOR.



Where are the cars designed for the seventies?
Well, one has arrived. The new 3-door Renault 5 TL and it's what you've been asking for.

It has a high top speed but a low petrol consumption figure (84 mph: 45 mpg). It has a lot of space and comfort inside, but is really compact outside. It has all the extras and refinements you could ask for, but none of the unnecessary trimmings.

Which means you get things like the heated rear window. Front disc brakes, alternator, electric fan and bumper shields which absorb small knocks without damage. Then it'll take you nippily through town traffic. Speedily on the open road. Accommodate all your family with ease. All the extra baggage when you fold the rear seats down.

All things considered, the new Renault 5 will probably be seen as the motoring breakthrough of the seventies. And you can see it in our showrooms now.

**STROUD MOTORS
LIMITED**
STROUD, PETERSFIELD
TEL. PETERSFIELD 3096

RENAULT

When you buy Renault you buy service

HAMPSHIRE PHILATELIC FEDERATION OFFICERS

President . Mr. F.B. Howard-White
Chairman . . . Mr. J. A. C. Farmer
Secretary . . . Mr. F. E. Kiddle,
10 Lea Wood Road,
Fleet, Hampshire
Treasurer Mr. J. M. Minns
Bulletin Editor . Dr. C. M. Philip
10 Compton Close,
Church Crookham,
Aldershot, Hants.

NOTES OF INTEREST

The Howard-White Trophy is competed for annually between affiliated societies, and two members from each society enter nine sheets each.

All other sheets of stamps and covers on display today are presented by members of the host society, Petersfield & District Philatelic Society.

On May 12th, at Weybridge, members of affiliated societies represented Hampshire in the Inter-County Dawes Cup competition. Surrey were first with 71 points, and Hampshire were second with 70. Six counties took part. Congratulations to the Hampshire representatives.

Previous venues of the Hampshire Federation Convention have been Winchester (1970, 1971) and Basingstoke (1972).

DEALERS PRESENT

Stamp Dealers who have kindly supported this Convention today are:

D. C. SUTCLIFFE, Salisbury Rd., Alresford, Hampshire.

PORTSMOUTH STAMP SHOP, 242 London Rd., Portsmouth.

KINGSBURY STAMP SHOP, 5 Queens Walk, Kingsbury, London NW9.

R. E. SADDINGTON, 156 Tuckton Rd., Bournemouth BH6 3JX

CORGI STAMPS, 5 Kelly Road, Bowers Gifford, Basildon, Essex.

R.F. STAMPS (Consult Corgi Stamps)

P.S. & A. DAUWALDER, 75 New Street, Salisbury, Wilts.

D. L. GREEN, Sticklands Farm, East Morden, Wareham, Dorset BH20 7DL

THE SELSEY STAMP CO., 43 Hillfield Rd., Selsey, Chichester, Sussex.

GAINSBOROUGH STAMPS, The Chantry, West Mills, Newbury, Berks.

CAMBERLEY STAMP CENTRE, 337 London Rd., Camberley, Surrey.

P. W. PARKES, 200 Clarence Rd., Fleet, Aldershot, Hants.

The Post Office have kindly provided a PHILATELIC SALES COUNTER.

HAMPSHIRE PHILATELIC FEDERATION

SECRETARIES OF AFFILIATED SOCIETIES

ALRESFORD & DISTRICT: Mr. S. G. Yates, Fairacre, Winchester Rd., Four Marks, Alton.

ANDOVER: Mr. J. E. Paine, 64 Bury Hill Close, Anna Valley, Andover.

BASINGSTOKE & DISTRICT: Mr. T. C. J. Young, 43 Penrith Road, Basingstoke.

HAMPSHIRE POLICE: Society now closed due to lack of support.

MILFORD-ON-SEA: Miss M. L. Lewitt, 58 High St., Milford-on-Sea.

NORTH HANTS (FLEET): Mr. P. W. Parkes, 200 Clarence Road, Fleet.

PETERSFIELD & DISTRICT: Mr. E. D. Allen, 6 Garage Lane, Station Rd., Petersfield.

PETTERS HAMBLE: Mr. D. P. Holmes, 37 Verdon Avenue, Hamble.

R.A.E. (FARNBOROUGH): Dr. C. M. Philip, 10 Compton Close, Church Crookham, Aldershot.

RINGWOOD: Mr. F. A. Holmes, Greyfriars, Christchurch Rd., Ringwood.

TIDWORTH: W.O.1 (R.S.M.) R. T. Lacey, Military Hospital, Tidworth.

VECTIS: Mr. J. M. Minns, 27 Parklands Ave, Cowes, Isle of Wight.

WINCHESTER: Mrs. S. Wren, 8 Markson Rd. South Wonston, Winchester.

THE HOWARD-WHITE TROPHY COMPETITION

The Trophy shall be competed for annually between Societies affiliated to the Hampshire Philatelic Federation.

Each Society's entry shall consist of exhibit by two members of that Society; each exhibit comprising not more than nine album pages of any recognised size not exceeding 12" x 10".

Judges will be instructed that rarity is not to be a determining factor, and will be asked to award marks as follows:

- | | |
|---|---------|
| a) General philatelic interest | Max. 15 |
| b) Philatelic knowledge, study & research | " 35 |
| c) Presentation and general arrangement | " 25 |
| d) Treatment of the subject(s) | " 15 |
| e) At the discretion of the judges | " 10 |

The Trophy will be awarded to the Society whose entry gains the highest total marks. The individual Trophy will be given to the individual exhibit which gains the highest marks. Each exhibit will be given a Certificate of Participation.

The judges decision shall be final.

This year the distinguished judges are:

Mr. George South, M.B.E., F.I.P.S.L.

Mr. A. R. Butler, F.R.P.S.L.

Mr. J. H. E. Gilbert, F.R.P.S.L.

Previous Trophy Winners

1970 Vectis Philatelic Society; 1971 North Hants Philatelic Society; 1972 North Hants Philatelic Society.

Individual Winners

1970 Mr. J. Gammon (Petersfield P.S.);

1971 Mr. A. Rose (Petersfield P.S.);

1972 Dr. C. M. Philip (North Hants P.S.).

WHEN IN SOUTHAMPTON
PLEASE CALL AT OUR SHOWROOMS
THE LARGEST IN THE SOUTH
60 feet of counter space

We specialise in wants lists through the post

Why not write for price-lists gratis?

**J. SANDERS
(Philatelist) Ltd.**

5-7 COMMERCIAL ROAD, SOUTHAMPTON.

Telephone: 29515/6



SWITZERLAND

As the leading specialists in Swiss stamps in the English speaking world (the only country we stock), we can offer collectors the following unrivalled services:

APPROVALS

NEW ISSUE SERVICE

SUPPLIES AGAINST WANTS LIST

SWITZERLAND CATALOGUE IN ENGLISH (£1.18 Post Free)

Our Approvals are fully insured in transit both ways and are available to clients throughout the world.

Please apply for details

H. L. KATCHER

THE AMATEUR COLLECTOR LTD.

151 Park Road, St. John's Wood, LONDON NW8 7HU

Telephone: 01-586 0616

P.T.S., A.P.S., A.S.D.A., S.P.A.